

Here are the Sections:

Meth 101 (PowerPoint slides)

This section provides a broad overview about meth. It discusses the drug's health and social effects, environmental impacts, economic costs and action-oriented strategies. Choose relevant slides to create a presentation about meth, or use specific slides from this section to include as part of a broader presentation.

Prevention (PowerPoint slides)

This section features information about the importance of substance abuse prevention and effective prevention strategies that can improve community health and safety.

Law Enforcement (PowerPoint slides)

This section provides an overview of the various issues law enforcement officials face regarding methamphetamine. Topics include types of meth labs, the toxic chemicals used to make meth, the dangers inherent in meth manufacturing, the process of meth lab cleanup and common signs of meth labs.

Treatment (PowerPoint slides)

Topics include: The health and behavioral consequences of methamphetamine dependence that need to be addressed in treatment; a review of the epidemiology and pharmacology of methamphetamine; and reviews of evidence-based and other promising approaches to treating methamphetamine dependence, as well as treatment effectiveness studies.

Drug Endangered Children (PowerPoint slides)

This section discusses the dangers meth manufacturing and use pose for children and provides an overview of the benefits of community-based programs that focus on drug endangered children.

Why Should You Care? (PowerPoint slides)

This section includes information about the impacts of meth on children, families, the environment, businesses, property owners and the general public, underscoring that meth manufacture and use is an issue that requires a communitywide response.

Statistics (PowerPoint slides)

This section includes information about how methamphetamine is used as well as meth and other substance abuse treatment data for youth and adults. Also featured are statistics focusing the link between meth and child welfare cases, meth-related emergency room visits and meth lab seizures.

Creating Your Own Slides

In this section, we show you how to create your own slides so you can highlight and add local data to your presentations. This section contains ten blank template slides with specific instructions on how to maintain the same "look" as the rest of the program.

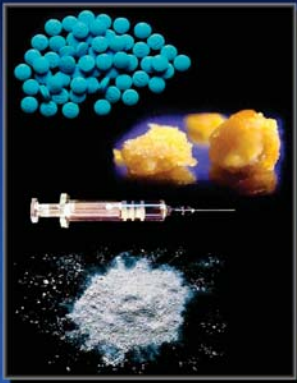
NOTE: Talking points accompany some of the slides to assist you in your presentations.

Methamphetamine 101

METH 101

Slide 1

What is Methamphetamine?



- Methamphetamine is a synthetic stimulant drug which induces a strong feeling of euphoria and is highly addictive
- Meth can be eaten, smoked, injected or snorted

Slide 2

Talking Points Included

Slang Terms for Meth



Slide 3

Methamphetamine 101 - Possible Talking Points

Slide 2 - What is Methamphetamine?

A stimulant, in the family of amphetamines, cocaine, caffeine. More potent than amphetamine because it is chemically enhanced. One of the strongest known stimulants. It affects the Central Nervous System. Meth has been used and abused for years.

Slide 4 - Short History of Meth

Do any of you remember benzedrine inhalers? They were a form of amphetamine available by doctor's prescription in the 1950s and 60s and were later regulated with the Controlled Substances Act because so many people became addicted to them.

Slide 5 - World War II and Post-War Meth Use

Adolph Hitler used methamphetamine through injections and pills during the war. Allied bomber pilots and Japanese factory workers used dexedrine to maximize their war effort. Japanese kamikaze pilots took methamphetamine for their suicidal missions. In Japan, methamphetamine abuse reached epidemic proportions immediately after the war, when supplies stored for military use became available to the public.

Slide 6 - Meth in the 50s and 60s

1950s: Many housewives were prescribed amphetamines to aid with weight-loss, and cope with boredom and depression. College students used amphetamines to stay awake while studying, truck drivers used them to keep alert on long trips and athletes used them to enhance performance. 1960s: Use changes with the increased availability of injectable methamphetamine and speed rose to popularity in California, home of many of the largest meth labs in the country. During this time meth became associated with the biker gangs of that region.

Slide 7 - Meth Use from the 70s to Today

1970: Meth, or speed, is regulated in the Controlled Substances Act. 1980s: Mexican drug manufacturers begin bringing meth north of the border. The greatest use is seen in the Southwest and Western United States. 1990s: Meth use begins and grows in the rural Midwest. Smaller labs begin to pop up in greater numbers. Today: Meth labs and meth use has affected much of the United States. Efforts to curb its progress have resulted in grassroots efforts and public policy work trying to stop the precursor ingredients used to manufacture meth.

Slide 8 - Why Do People Abuse Meth?

Used by persons who want to lose weight. Used by workers who work extra shifts. Used by athletes and students for heightened physical and mental performance. Used to stay energized at rave parties and other social activities. Less expensive and more available than other stimulants. In high school, teenage girls have referred to meth as the Jenny Crank diet.

Slide 9 - Short-Term Side Effects

Formication is the sensation which makes users feel like bugs are crawling under their skin and is one reason why some users pick at themselves and cause open sores on their body.

Slide 10 - Long-Term Effects

Not all users exhibit the same symptoms and sometimes users display no physical symptoms at all.

Slide 12 - Smoking Crystal Methamphetamine

These are photos of Crystal Meth. Smoking Crystal Meth produces an intense and brief dopamine rush. Dopamine is the chemical in the brain which causes us to experience pleasure. Meth creates a rush of dopamine at unnaturally high levels to occur in the brain.

Law Enforcement

LAW ENFORCEMENT

Slide 1

Methamphetamine Purity

- Recently seized methamphetamine has been analyzed at 70%-90% purity
- Variances in color are often indicative of "purity"



Photo courtesy of the Institute for Intergovernmental Research (IRI).

Slide 2

Talking Points Included

Three Main Methods of Meth Production

Red Phosphorus/Iodine



Urine Reconstitution

Anhydrous Ammonia

Slide 3

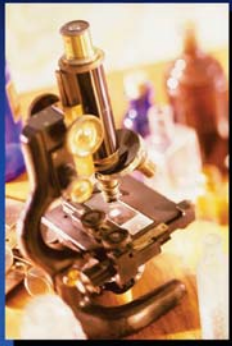
Talking Points Included

Treatment

TREATMENT

Slide 1

Methamphetamine Pharmacology



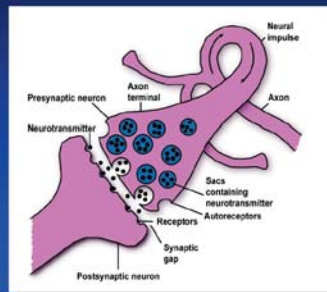
- Neuropharmacology
- Brain-behavior
- Teeth
- Gastrointestinal
- Metabolism
- Infectious disease
- Skin – crank bugs

Slide 2

Talking Points Included

Neuropharmacology

- Neurotransmitters are tiny electrical and chemical messengers
- Axon (sender)
- Dendrite (receiver)
- Synaptic Gap (space in-between the cells)
- Lock & Key mechanism



Slide 3

Talking Points Included

Why Should You Care?

WHY SHOULD YOU CARE?

Slide 1

Some of the Victims of Meth

- Children
- Parents
- Family
- The environment
- Employers
- Landlords
- Victims of meth-related crimes
- The Public
- You

Slide 2

Children

- Parents who are using meth typically become extremely negligent with their children
- Besides neglect, there are often other types of abuse:



- Sexual and physical abuse
- Unstable and unprotected environment
- Poisonous chemicals and dangerous residue

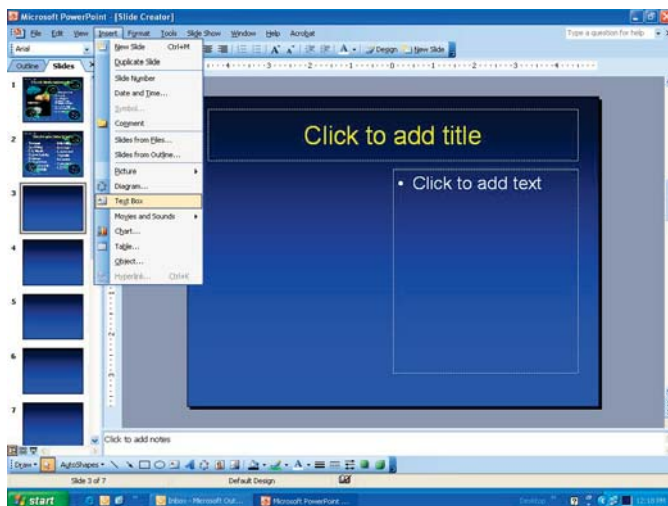
Slide 3

Talking Points Included

Creating Your Own Slides

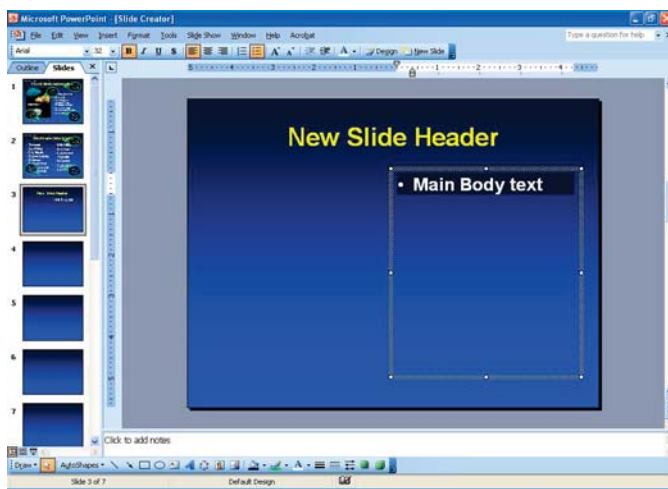
To begin creating your own slide, you will need to open the file on your Tackling Meth CD called – Creating Your Own Slides. You can either open the file directly from your CD or you can open PowerPoint first and select File – Open from the menu located at the top of your screen. You will then need to open your CD drive and select the file you would like to open.

Listed below are four steps designed to help you create your customized slides while keeping a consistent look with the rest of your presentation. Finally, on the bottom of page 63 you will find instructions on how to change font type, color and size.



Step One – Header

The first step in creating your own slide is to insert the header text. To do this you will either click on the “Click to add title” portion of the blank slide, or, you will choose Insert – Text Box from the menu at the top of your screen. By placing your cursor inside the blank slide and clicking once you will be able to begin entering your text. After the text is entered you will need to check the size, color and font so that it matches the template of our slides. Our header font is Arial, color for the header is yellow and the size ranges from 36-44 point depending on the amount of text entered. The last thing you will need to do is center your header by dragging the text box to your desired location. To do this you hold your mouse button down over the edge of the text box. (View pages 63-64 for ideas on how to place your header).



Step Two – Main Body Text

After placing your header, the next step is entering and placing your body text. This is accomplished by either clicking on the “Click to add text” portion of your blank slide or by choosing Insert – Text Box from the Menu at the top of your screen. By placing your cursor inside the blank slide and clicking once you will be able to begin entering the main body text. After the text is entered you will once again need to verify the size, color and font. Our main body text font is Arial, and the color is white and the size range from 18-26 point depending on the amount of text entered. Lastly, you will place your text by dragging the text box to its desired location. To do this you hold your mouse button down over the edge of the text box. (View pages 63-64 for template layout).